

GIRLS GROUP DRAFT ORGANIZATION CHART JANUARY 30, 2025

BOARD OF DIRECTORS

Doug Finch, *Board Chair*
 Lisa Wetzen, *Board Vice-Chair*
 Sue Schooner, *Executive Director*

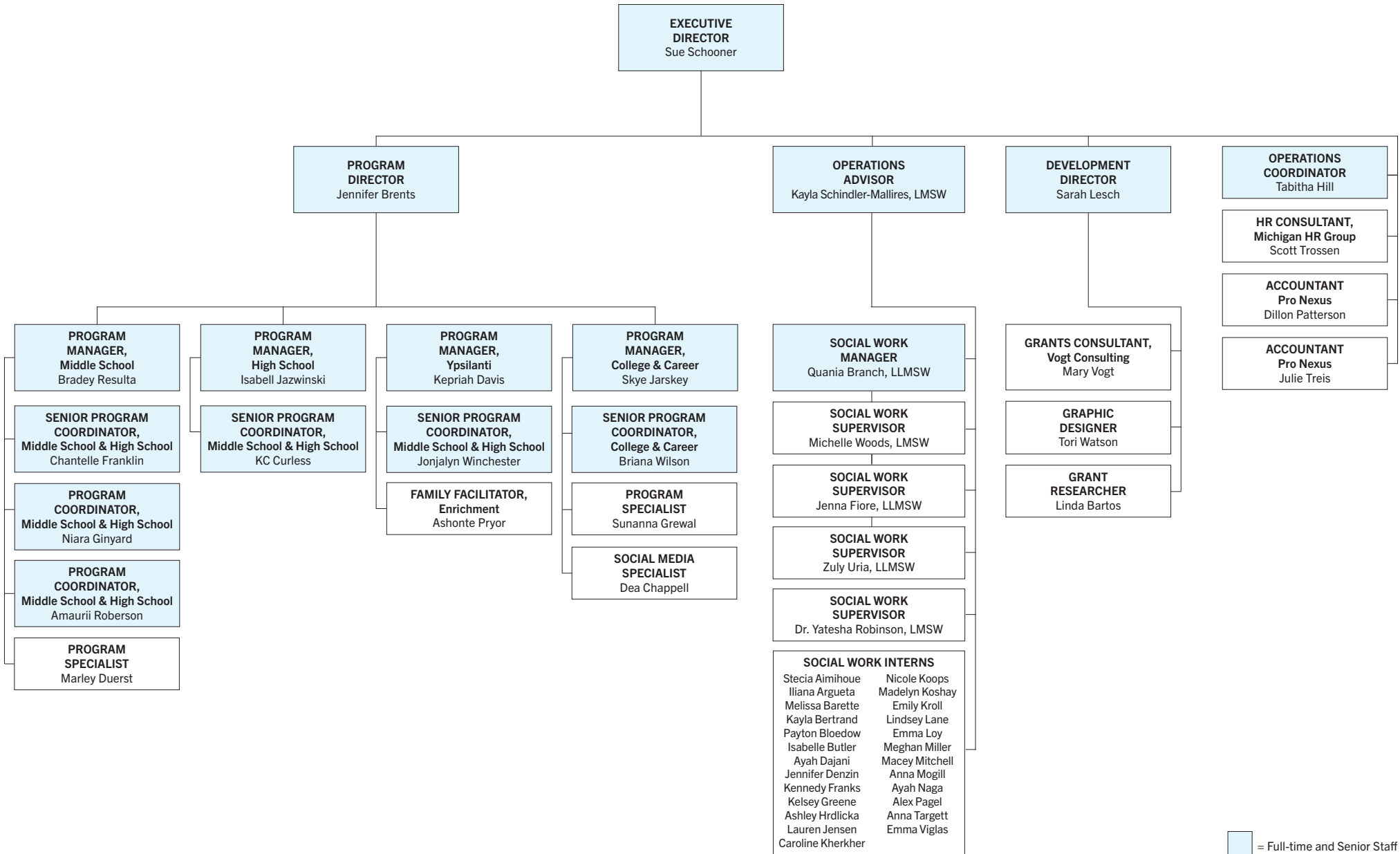
Jamie Guise, *Secretary*
 Bill Mathewson, *Treasurer*
 Alex Cash

Alison Davis
 Athena Johnson
 Joanna Johnson

Jenny Keil
 Carlton Lartigue
 Nancy Leon

Megan Mazurek
 Aubrey McCullen
 Jenn Muse

Laurita Thomas
 Ann Tomlanovich
 Brandon Tucker



= Full-time and Senior Staff